

# Anatomage®

## SLIM

# TABLE



### What is the Anatomage Slim Table?

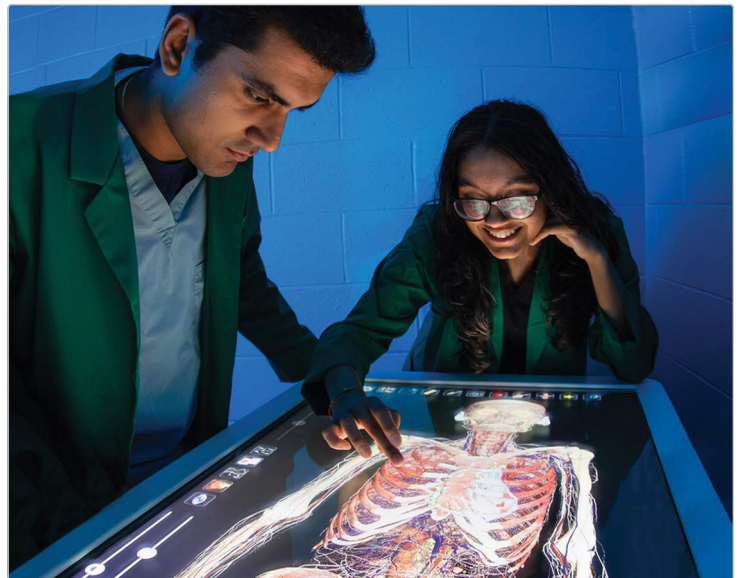
- Compact, sleek hardware with a 65" interactive display that delivers rich anatomy and physiology content
- Offers a more affordable medical education tool with high accuracy and advanced functions
- Access to Anatomage's full warranty, expert training, customer support, and large user community for curriculum help and educational resources

### What Makes the Slim Table Unique

- Low-cost educational tool with a slim profile and next generation hardware
- Includes comprehensive and interactive anatomy and physiology content
- Maintains Anatomage Table-level of detail
- Possible to upgrade to the Anatomage Table's full content and functionality

### Our Technology

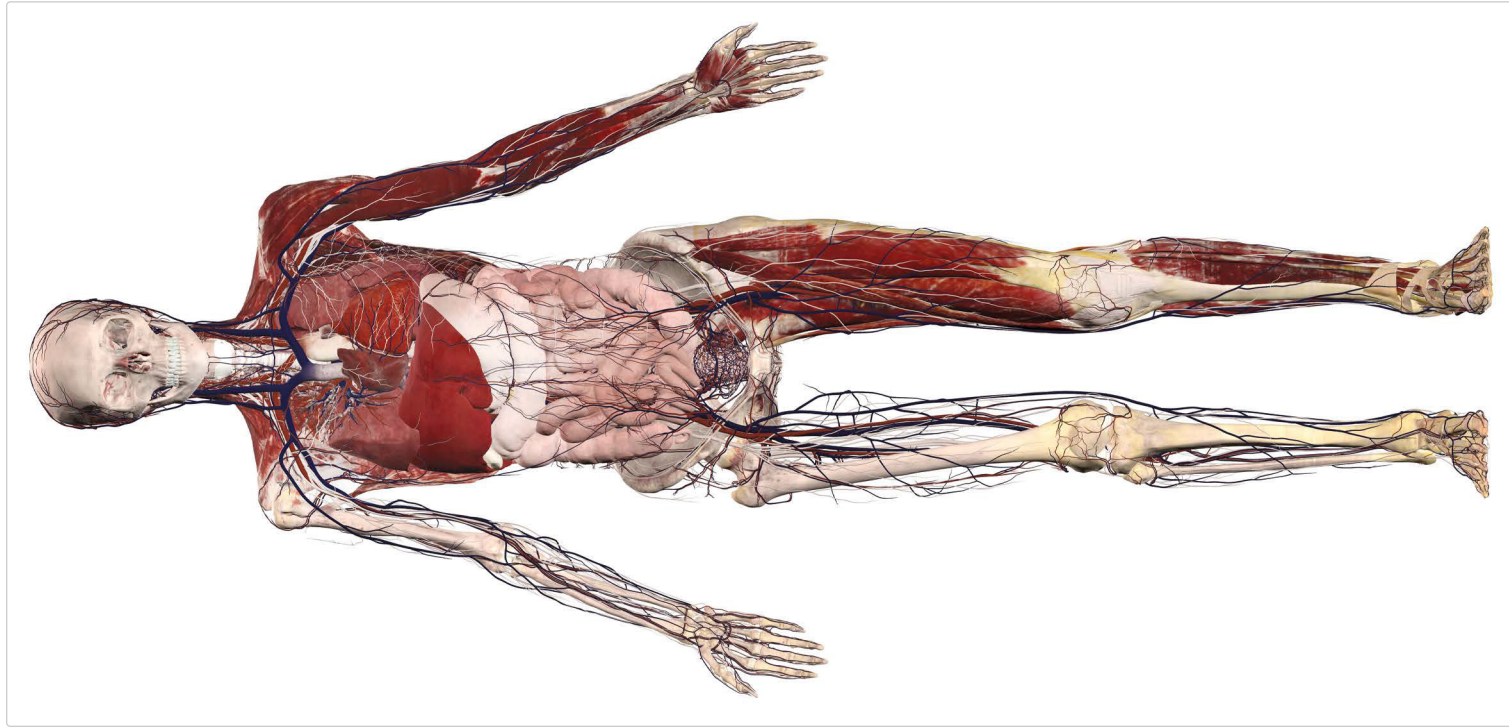
Our innovations have set new standards in volumetric visualization and image segmentation - providing unprecedented anatomical detail and accuracy for medical education and clinical training, with annual additions and continuous refinements year after year.



## Gross Anatomy



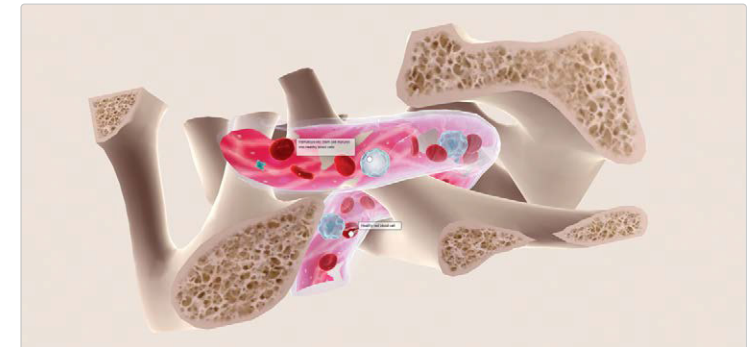
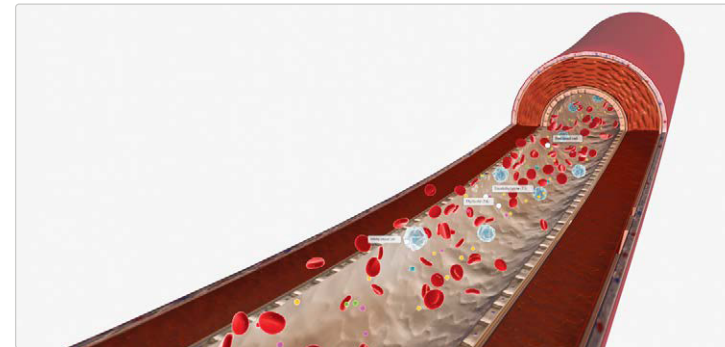
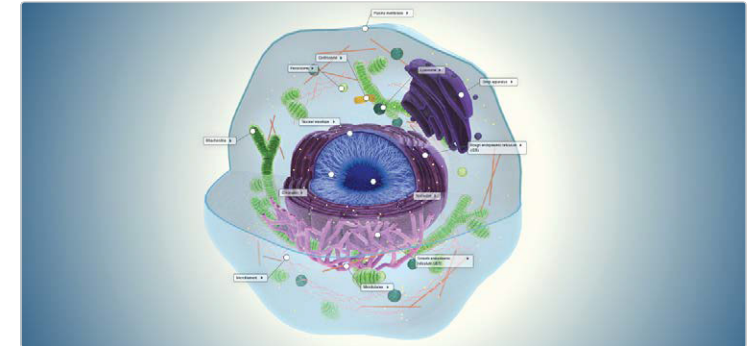
1 standardized female reference body



## BioDigital



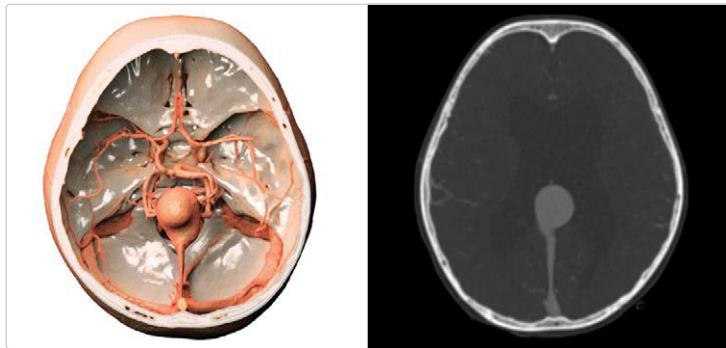
Five full-body dissectible models (one adult male, one adult female, one pediatric female (toddler), one pediatric male (toddler), and one pediatric male (infant))



## Case Library



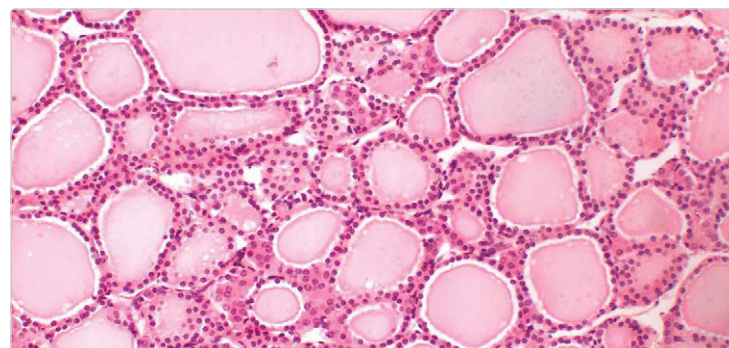
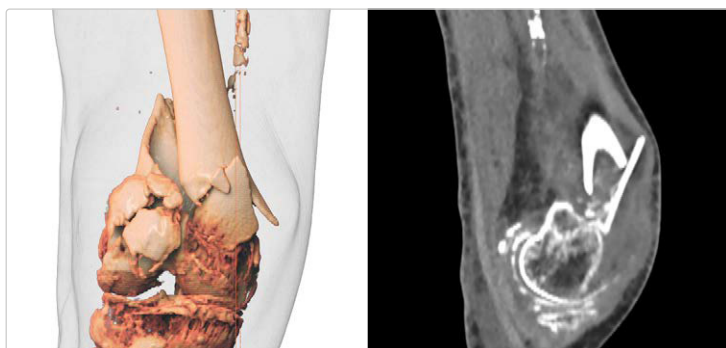
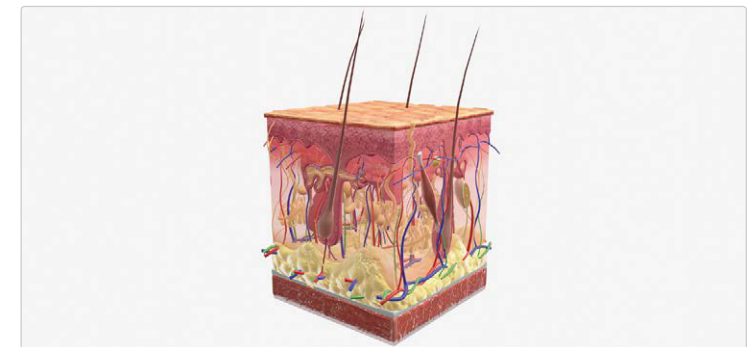
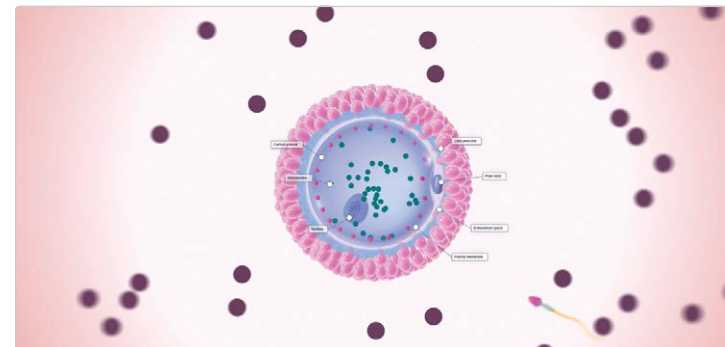
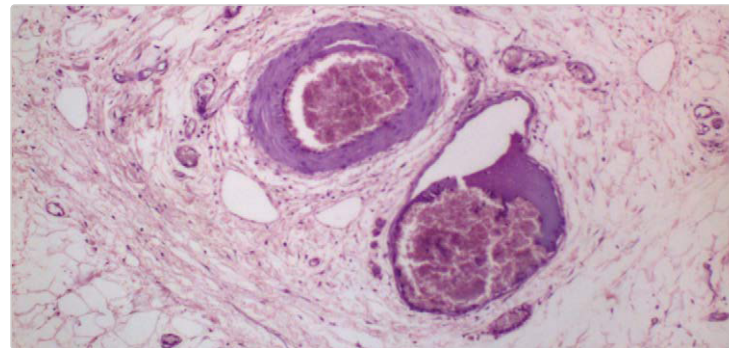
200 real patient CT/MRI images



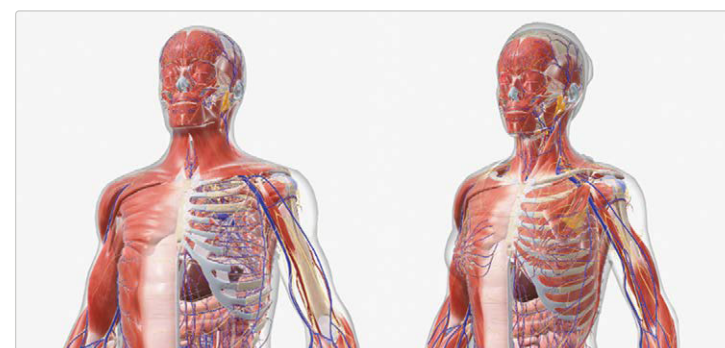
## Histology



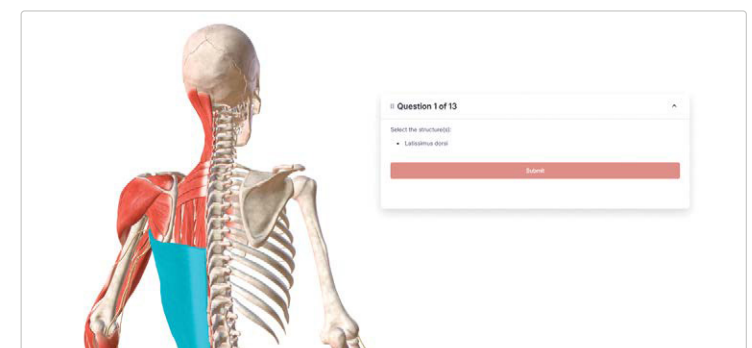
1,399 slides of human body tissues



2 complete 3D anatomy bodies (male and female)



219 preloaded quizzes



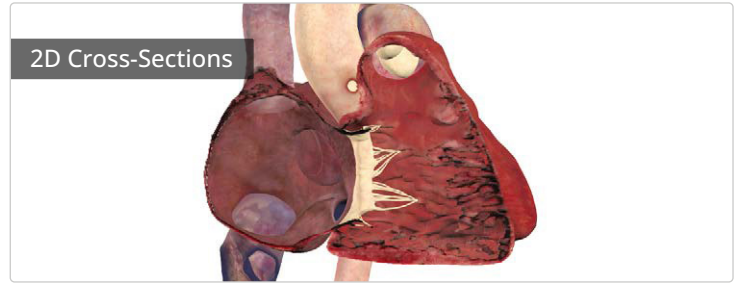
## Explore Cadavers with State-Of-The-Art Technology



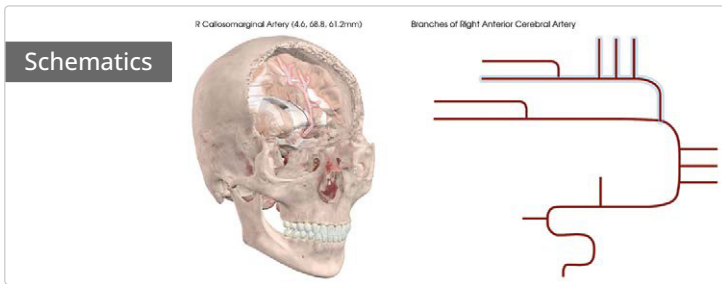
With the same Anatomage Table gross anatomy functions



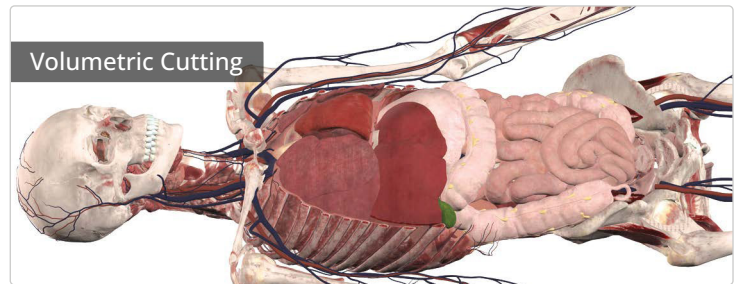
Simulate blood flow



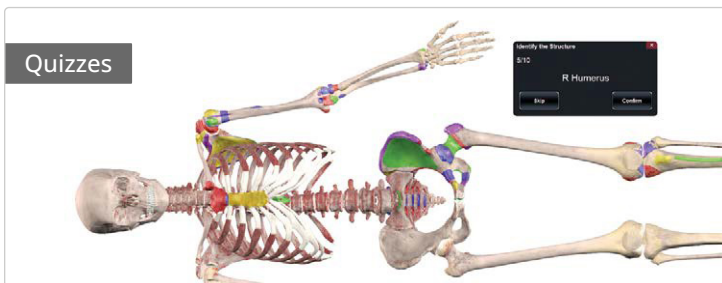
View in axial, coronal, or sagittal plane



Simplified diagrams of branch pathways



Perform layer-by-layer cuts



Test with user-created quizzes



Save and load custom preset views

## Applications



- Lecture aid that improves learning outcomes
- Self-directed learning for increased student retention
- Technology showcase establishing leadership in innovation

## Hardware



- 65" touchscreen Table
- Dimensions: 62.4" x 35" x 37.8" (LxHxW)
- Integration: Wi-Fi, HDMI, USB, Ethernet ports.  
Connect to the internet, projectors, and external monitors.
- All product hardware is subject to change



## Contact Us

Email: [corporate@trivitron.com](mailto:corporate@trivitron.com) | Call: +91 98400 80008 | [www.trivitron.com](http://www.trivitron.com)